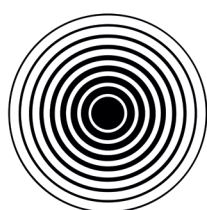
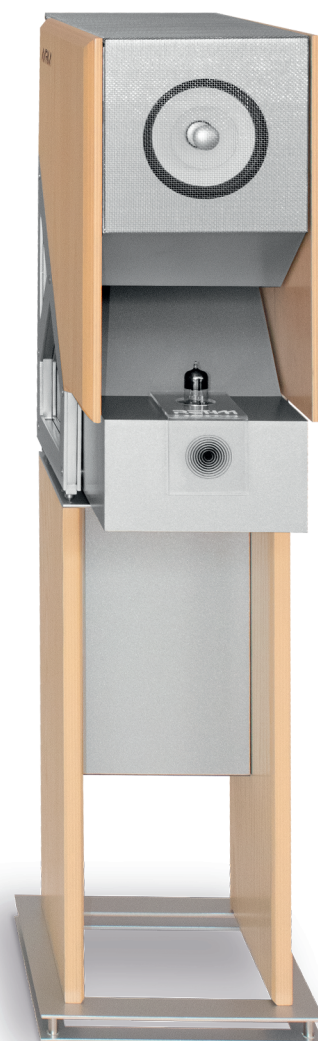


# RETHM AARKA

## OWNERS MANUAL

---



RETHM

## UNPACKING

Please follow the below procedure to unbox your speaker properly.



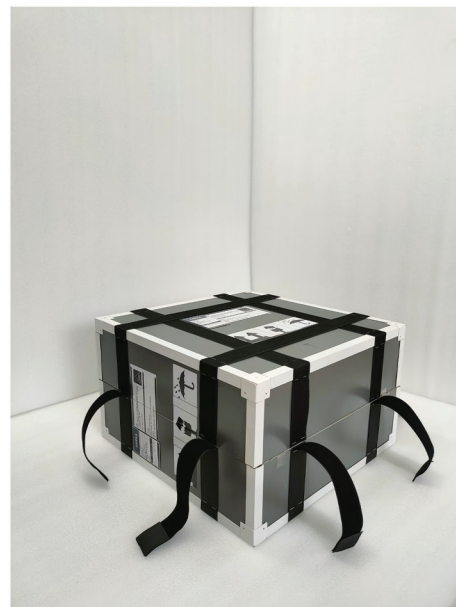
01- This is your speaker wrapped in MDF box.  
Take one speaker from the pallet.



02- Lay the box horizontally on the floor.

See that the arrows sticker is in right direction (upwards).

03- Remove the velcro from top as indicated.



04- Remove the top part of the box.



05- This is what you see when top cover is removed.



06- Stand the box upright with "TOP" in the right direction.



07- Tilt the speaker as shown in the picture.



08- The speaker cover can be untied.

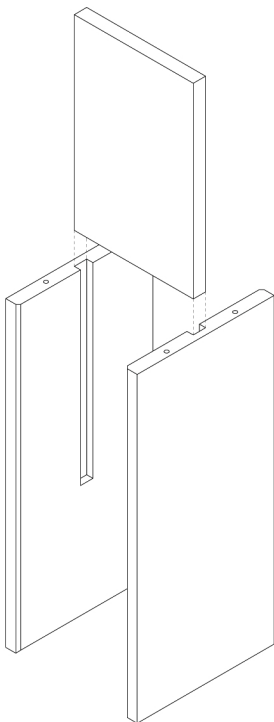


09- Remove the cover slowly.

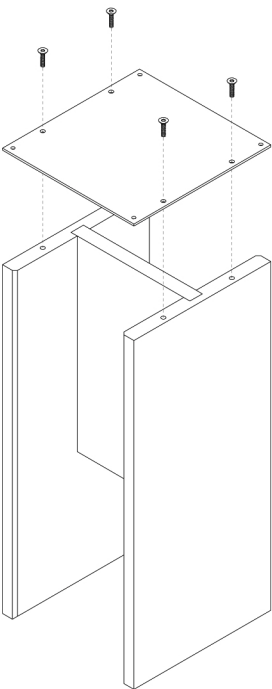


STAND ASSEMBLY

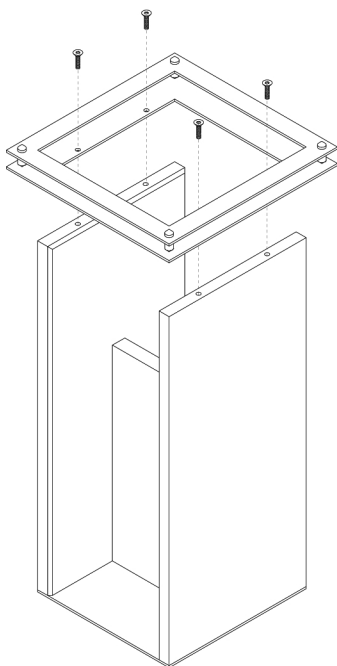
1



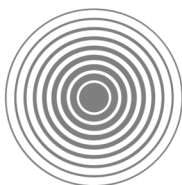
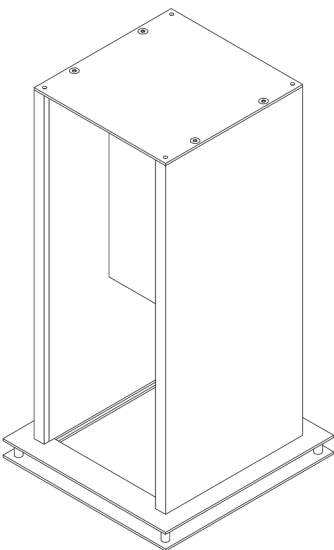
2

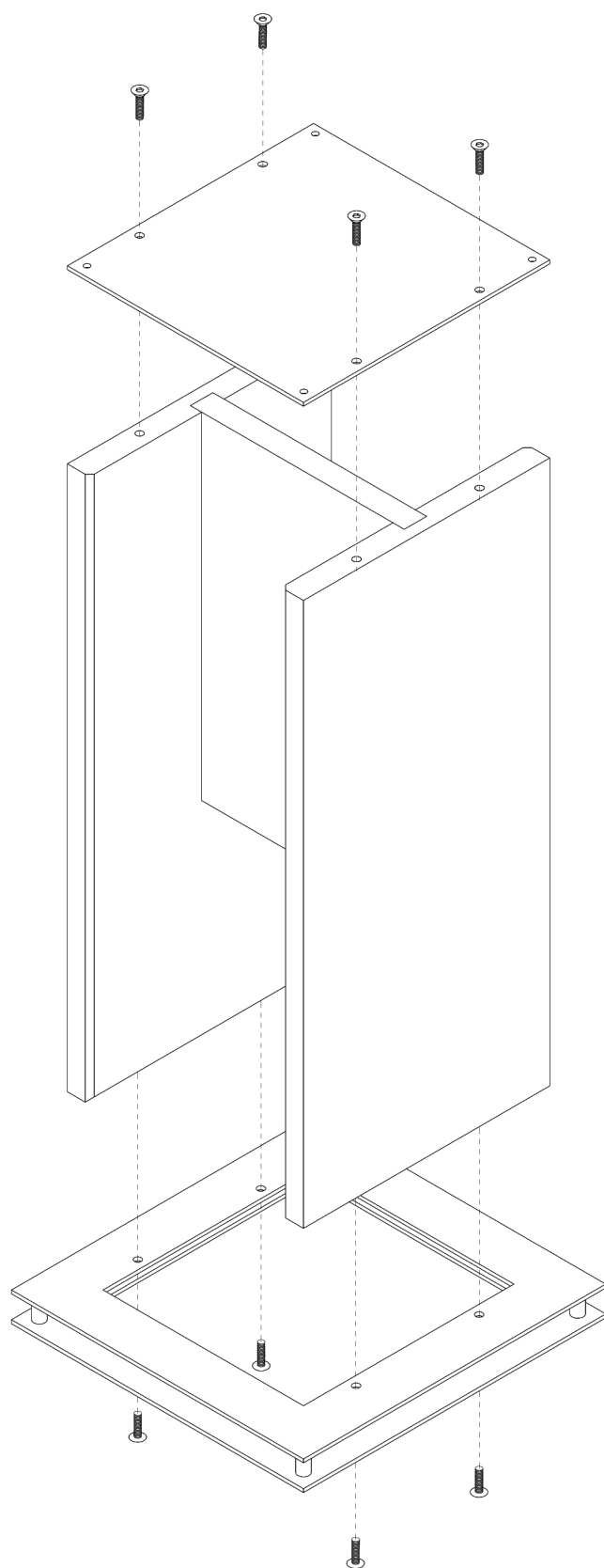


3



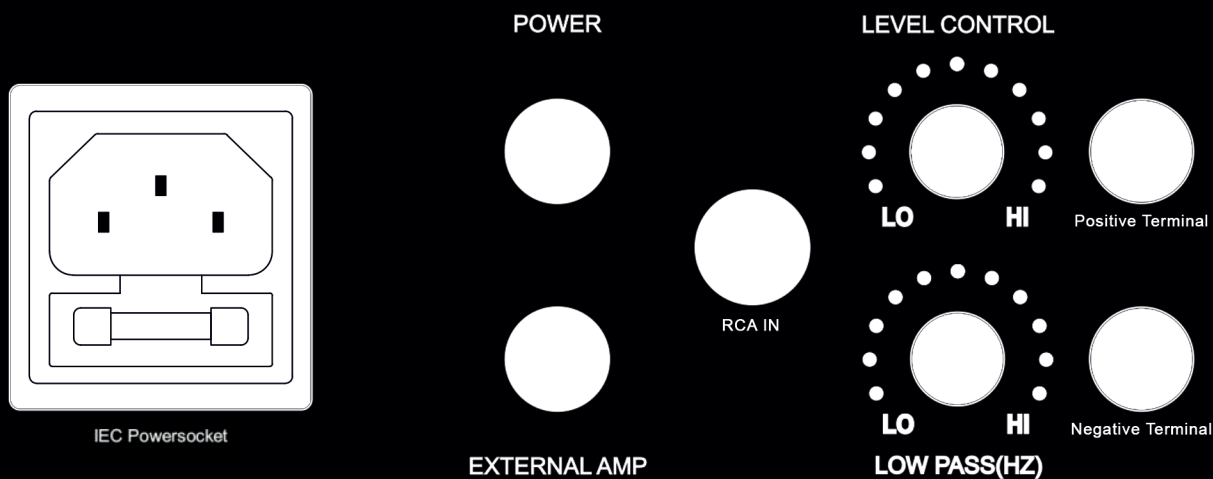
4





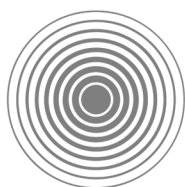
RET11

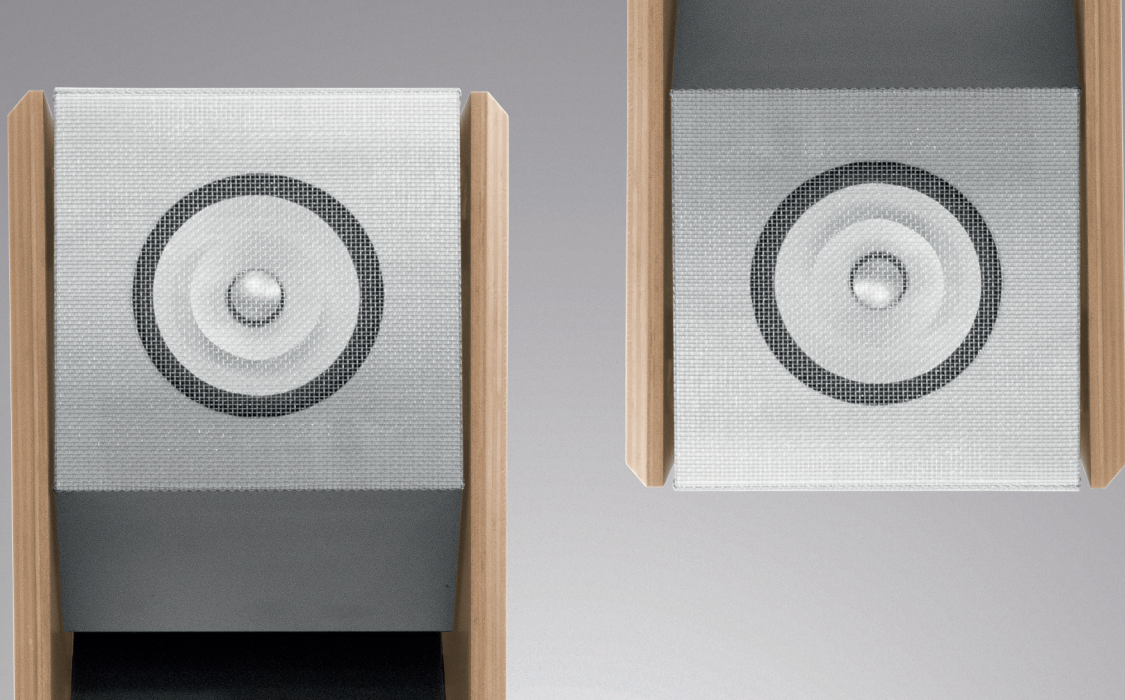




## BACK PANEL

- **Power Socket** - Accepts all IEC plugs. It also comes with a built in fuse.
- **Power Switch** - The button has to be pushed IN to put the unit ON.
- **Level Control** - This knob controls the volume level of the bass module.
- **Low Pass** - This knob controls the low pass filter setting. The higher settings will increase midbass content.
- **External Amp** - This button has to be pushed IN if the built-in hybrid amp is to be bypassed and an external amp is to be used.
- **Negative and Positive binding posts** are self-explanatory. Our binding posts are selected to minimise metal content. However, these will be used only when the internal hybrid amp is bypassed, and an external amp is being used.
- **RCA IN** - This RCA socket is to be used to connect the Preamplifier (or Source component) to the AARKA via an interconnect when using the internal hybrid amp of the speaker.





## SETTING-UP

Now that you have the speakers unpacked, you are ready to start the process of set-up.

As a starting thumb-rule, for optimum reproduction, we suggest that the speakers be placed one-third way in from the front wall. It is an accepted fact that the leaving of substantial space behind the speakers improves soundstage depth. This applies to most speakers and not just the Rethms (although some speakers do soundstage better than others). We understand that this placement may not be possible in many listening rooms. The Rethms can be placed much closer to the front wall, and still reproduce music perfectly – however, with compromised sound stage depth.

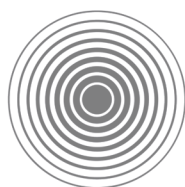
Most large speakers do have problems in smaller rooms as they tend to overload bass – and this is exacerbated when positioning speakers close to the walls. The Rethms have the great advantage of having adjustable bass – thereby eliminating this problem.

The Rethms are by and large indifferent to the closeness of side walls and perform perfectly even at 45 cm (1" - 6") from the side walls. But, yes, it will sound even better with more space all around.

Once you have them in its approximate location, you can start the process of final placement. We suggest that you do this with the bass module "OFF".

Listen for the following"

- Midrange warmth and density
- Image clarity and focus
- Sound stage depth and width



RETHM



When this is done and you feel you have it right, you can switch on the bass module and start dialing in the bass.

There are 2 adjustments for the bass

- Level control. This quite simply controls bass volume
- Filter control. This controls the setting on the active, variable low-pass filter for the powered bass module. The lower settings enhance perceived lower bass content, and the higher settings allow for more midbass and lower midrange frequencies.

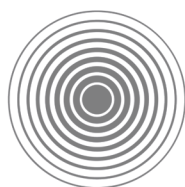
The two controls have to be used in tandem. As one turns up the filter control setting, there is a perception of higher bass volume - which then will have to be compensated for by turning down the level control.

There is no "factory setting" – as every room is different and many different front-ends have different bass outputs. Rooms built with gypsum and studs (as most buildings are in North America) tend to suck out more midbass than homes built with brick and concrete. However, a good place to start is with both controls at 12 O' clock

Once you have the speakers positioned to your satisfaction, they can be levelled:

The Aarkas have levelling spikes in 2 places:

At the base of the stands; and at the base of the loudspeaker.



RETN



## MESH COVER

The mesh is made of stainless steel.

The mesh panels over the drivers are removable so as to enable access to the drivers if needed.

They all held on by magnetic catches and the panels can be pulled off.

The speakers, however, are designed to be used, and heard, with the mesh panels in place, as they are acoustically transparent, unlike the usual cloth nets used in most speakers.

Some "audiophiles" may assume that being steel, it is prone to vibration induced noise.

Please note that this is not so, and they are not prone to any sympathetic vibrations.

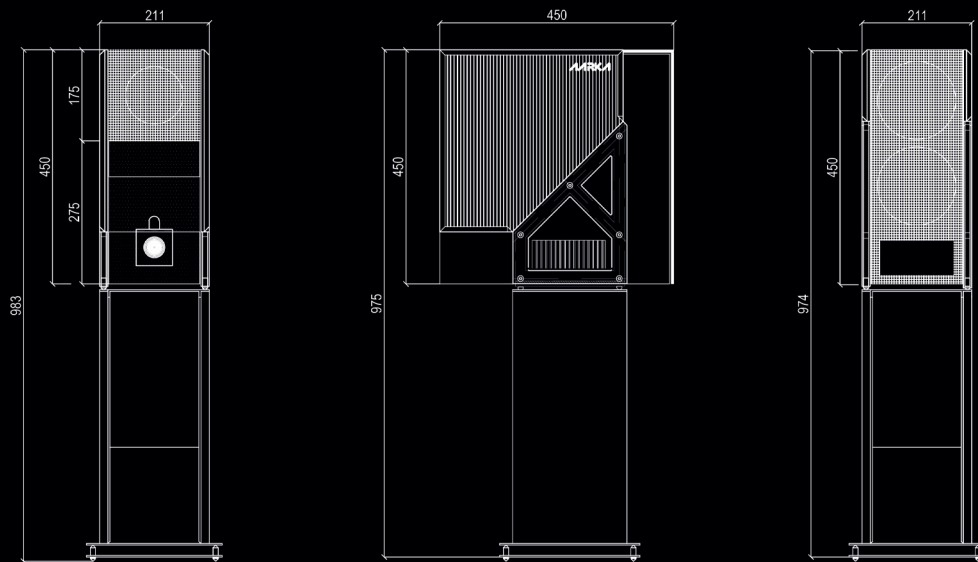


## LOGO AND NAME PLATE

The L-shaped clear acrylic logo and name plate at the lower end of the speaker's front is held on by a magnet behind and at the centre of the "bulls eye".

If the piece comes off, all you have to do is position it in the correct place - and it will automatically snap in place.





## SPECIFICATIONS

Driver configuration:

- 1 no. 5 in. Wideband driver in front.
- 2 x 6 in. Bass drivers at the back.

Electronics configuration:

- 1 amp. for bass drivers: 95 wpc. class AB solid state amp.
- 1 amp for wideband driver: 25 wpc hybrid amplifier with FET output and tube driver stage. Tube used as driver is 6H6P.

Rear control panel has the following:

- Power on/off switch
- Internal amplifier bypass switch
- Level control
- Crossover filter control
- RCA input socket for line level signal.
- Binding posts for speaker level inputs.
- Power input socket.

Size:

- 8.66 in. (22 cm) Wide
- 17.71 in. (45 cm) Deep
- 18.50 in. (47 cm) High
- Weight: 20 Kg (44 lbs)
- Shipping Weight: 26 Kg (57.32 lbs)
- Speaker sensitivity: 94 dB/w/m
- Minimum recommended amplification: 5 wpc.





## WARRANTY

RETHM LOUDSPEAKERS warranties all its products for a period of 5 years. Any failure that is not a result of faulty use or faulty shipping, shall be repaired free of cost. However, shipping charges will apply.

### LIMITATIONS:

- This warranty does not cover failure of product resulting from improper installation, misuse, abuse, accident, neglect, mishandling, improper shipping or wear from ordinary use or environmental deterioration.
- This warranty is null and void for products not used in accordance with RETHM's instructions.

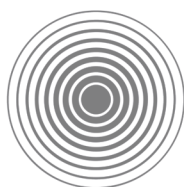
## RETHM LOUDSPEAKERS

[www.rethm.com](http://www.rethm.com)

ADDRESS: Design Build Pvt. Ltd., X/574 C, Kusumagiri P.O., Kakkanad,  
Cochin, Kerala, India- 682030

Tel : +91 9349226365

E-mail : [jacob@rethm.com](mailto:jacob@rethm.com)



**RETHM** —